

# 1.

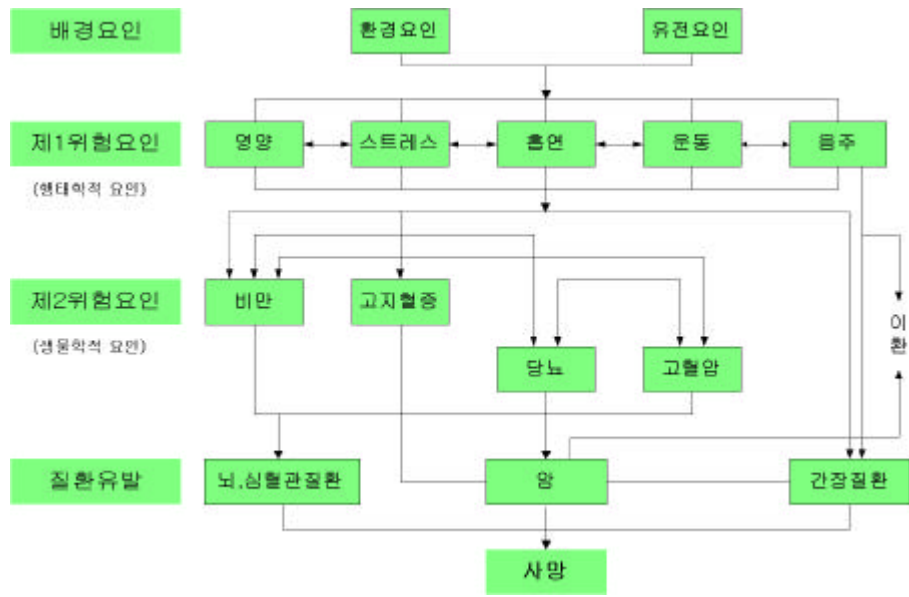
가  
 가 ( , 1983, 1995). '83 58.5% '95 가  
 70% 가가  
 , , ,  
 , ,  
 ,  
 1998- 1999  
 ( ' ) 1998 10  
 1999 8 가 ,

				/	
			*		*
	8	5	6	5 3	12

\* :

	18
	5 ( , , , )
	4 ( , , , )

가 .  
가  
가 가 가  
가 .  
1998 7 , , ' , ,  
( 1 ) , , , ,  
( 2 2 )



Al 1) 가 , 2) , 3)

1) (Health Promotion) : 가 가 , 가 가 , 가



2) 가 , 4)  
 , 5)

가

가

2

가

2)

가			가	
		-	.	-

## 2.

### 2.1.

1998 3 ( , , )  
30  
(【 2-1】).

【 2-1】

·	
	가

### 2.2

(1) (2) , (3)  
, (4) , (5)  
· ·

(1)

- , , ,

(2)

-

-

-

-

(3) ( )

(4)

-

-

(5)

-

• /

• /

-

• ,

•

• - ,

### 2.3

1)

1998  
(pre-test)

50 , ,

.

2)

가

.

3)

1999 11 15 - 11 30 2 .

### 3.

#### 3.1

1998 3 30 454  
 (【 3-1】 ). 60 가 가 70  
 50 80 (【 3-2】 ). 가  
 64% (【 3-3】 ).

【 3-1】

	(%)
	110 (24.23)
	251 (55.29)
	93 (20.48)
	454 (100)

【 3-2】

( )	(%)
30-39	3 ( 0.83)
40-49	17 ( 4.71)
50-59	73 (20.22)
60-69	149 (41.27)
70-79	94 (26.04)
80-	25 ( 6.93)
	361 (100)

【 3-3】

	(%)
	130 (36.11)
	230 (63.89)
	360 (100)

### 3.2

### 가

1 ( ) 6  
 23.13% 가 , 10  
 가 6.8% 가 (【 3-4】 ).

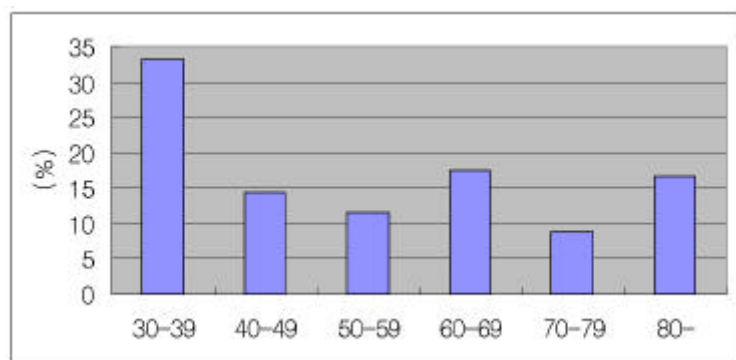
【 3-4】

	(%)	
-5	69	(15.65)
6	102	(23.13)
7	95	(21.54)
8	97	(22.00)
9	48	(10.88)
10 -	30	( 6.80)
	441	(100)

1 1 2 , 1  
 20 , ,  
 13.36%가  
 (【 3-5】 ). 30 30%가 가  
 20% (【 3-1】 ).

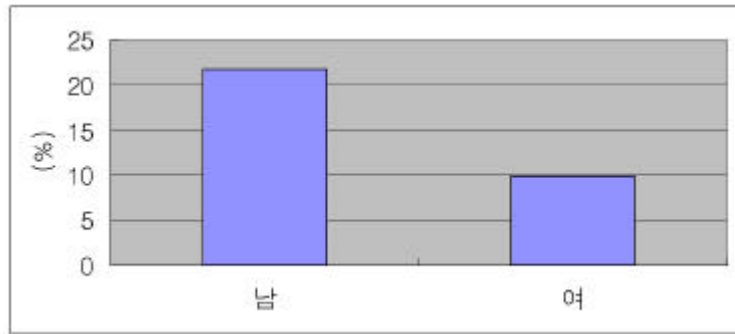
【 3-5】

	(%)	
	376	(86.64)
	58	(13.36)
	434	(100)



¼ 【 3-1】

가 20% (【 3-2】 ).



【 3-2】

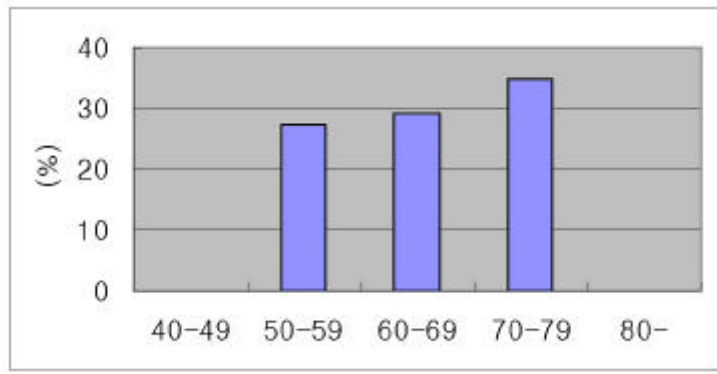
### 3.3

1 1 (6 )  
 ( ) 23.54% (【 3-5】 ),  
 1 1 (6 )  
 15.85% 가 60.61% (【 3-5】 ).

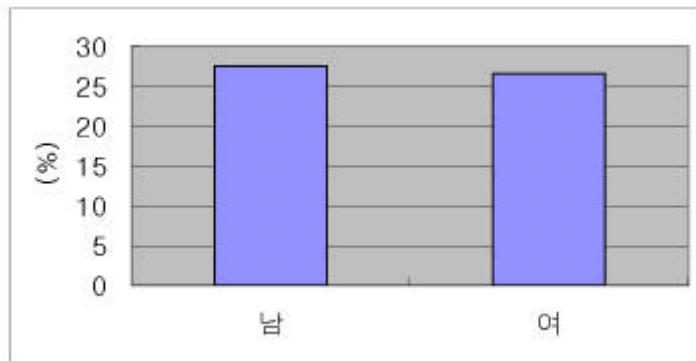
【 3-5】

	(%)
101	(23.54)
68	(15.85)
260	(60.61)
429	(100)

가 30% , 60 , 50 , 40 80  
 0% (【 3-3】 ). 25%  
 (【 3-4】 ).



【 3-3】



【 3-4】

### 3.4

6 18.96%  
11.14%  
69.91% (【 3-6】 ).

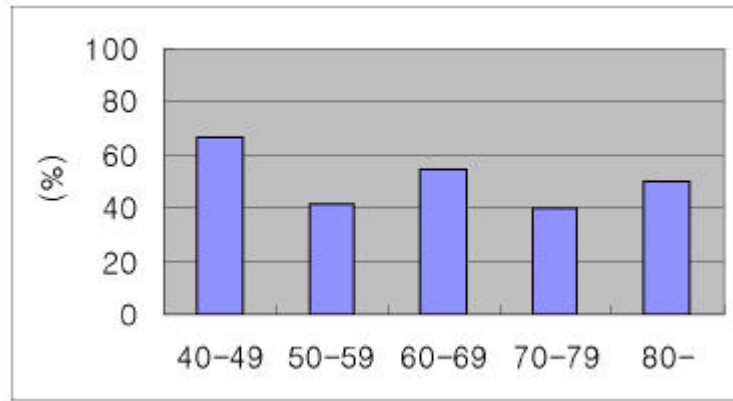
【 3-6】

	(%)
80	(18.96)
47	(11.14)
295	(69.91)
422	(100)

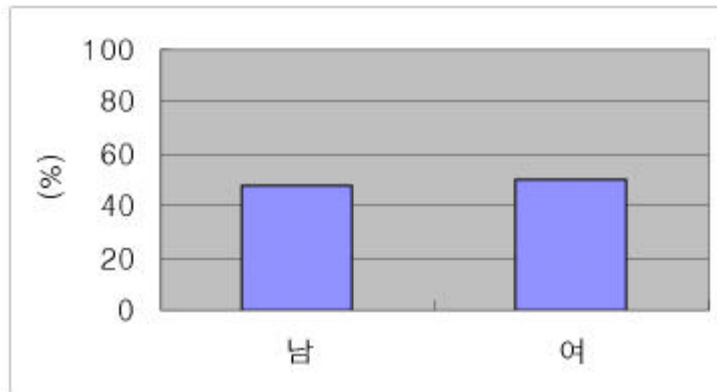
가 40 가  
가 60% , 60 , 80 , 50 , 70

(【 3-5】). 40%

(【 3-6】).



¼ 【 3-5】



【 3-6】

### 3.5

42.79% 가 ‘ , ’ , ‘ , ’ ,

2% (【 3-7】).

46.35% (【

3-8】).

‘ , ’

가 60% 가

50% (【 3-9】 , 【 3-7】).

【 3-7】

	(%)
	8 ( 1.80)
	121 (27.25)
	190 (42.79)
	115 (25.90)
	10 ( 2.25)
	444 (100)

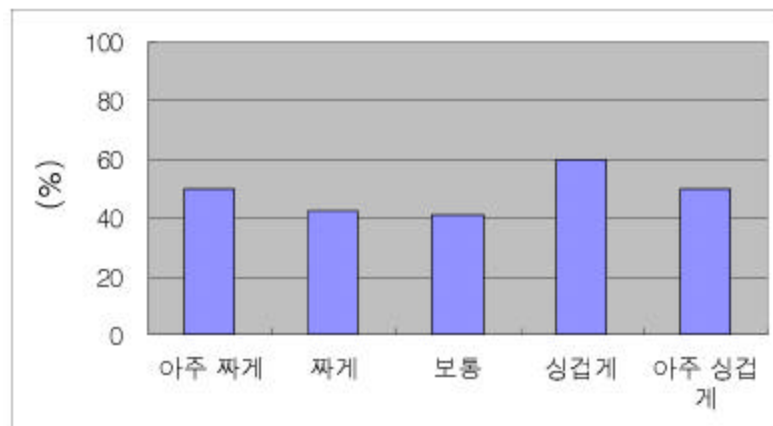
【 3-8】

	(%)
	235 (53.65)
	203 (46.35)
	438 (100)

【 3-9】

	(%)*
	50.00
	42.37
	40.43
	59.65
	50.00
	46.35

\* : 가

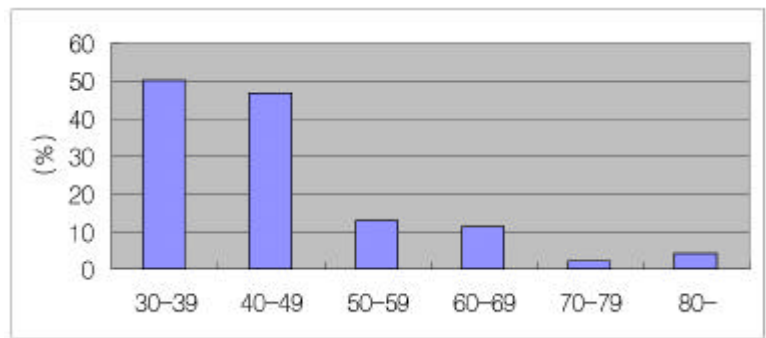


【 3-7】

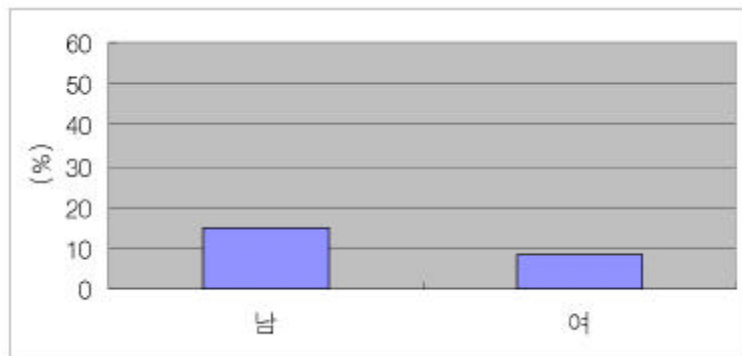
10.49%  
 (【 3-10】), 30 가 가 50%  
 40 20%  
 (【 3-8】). 가 10% 10%  
 가 (【 3-9】).

【 3-10】

	(%)
	384 (89.51)
	45 (10.49)
	429 (100)



1/4 【 3-8】



1/4 【 3-9】

### 3.6

가

32.51%가 ‘ , ‘ ,  
 , 58.14%가 9.5%가 ‘ ,  
 (【 3-11】).

46.56% 13.43%  
 10.30% ‘ , ‘ , ‘ ,

(【 3-12】).

【 3-11】 가

가	(%)
	13 ( 2.94)
	130 (29.41)
	257 (58.14)
	42 ( 9.50)
	442 (100)

【 3-12】 가

(%\*)

	3 (23.08)	7 (53.85)	2 (16.67)
	21 (16.67)	58 (45.67)	17 (13.60)
	30 (11.95)	117 (46.06)	22 ( 8.84)
	4 ( 9.52)	21 (50.00)	3 ( 7.32)
	58 (13.43)	203 (46.56)	44 (10.30)

\* : 가 ( )

3.7

( , )  
 60.37% / /  
 가 59%가 가 ,  
 (【 3-14】).

【 3-13】

	(%)
	172 (39.63)
	262 (60.37)
	434 (100)

【 3-14】

*	(%)
	107 (41.00)
	110 (42.15)
	98 (37.55)
, ,	154 (59.00)
	14 ( 5.36)
	13 ( 4.98)
	261 (100)

\*: 가

OX 10  
 가 . 1 , 0 10  
 4.10 (【 3-15】 , 【  
 3-16】 ). 40 가 가 60 , 50  
 (【 3-15】 ) (【 3-15】 ).  
 10 【 3-17】  
 (1 ) , (2 ) , (3 ) , (4 ) 25% , (5 ) ,  
 (6 ) , (7 ) , (8 ) , (9 ) , (10 ) 70%  
 ( : 2 page ).

【 3- 15】 가 ( :10 )

	±
30- 39	2.33 ± 2.52
40- 49	5.07 ± 1.98
50- 59	4.13 ± 1.96
60- 69	4.37 ± 1.92
70- 79	3.98 ± 2.13
80-	2.57 ± 2.25
	4.11 ± 2.06

【 3- 16】 가 ( :10 )

	±
	4.24 ± 1.81
	4.03 ± 2.19
	4.10 ± 2.06

【 3- 17】 가(10 )

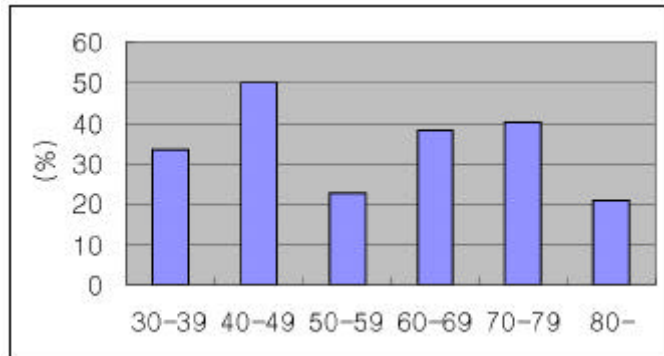
	(%)
가	22.01
	9.32
	7.61
가	10.57
	90.07
( )	77.14
	85.99
	93.71
	97.01
⑩	92.81

### 3.8

가 33.87% ( 【 3- 18】 ). 40  
 가 70 , 60 .

【 3-18】

	(%)
	287 (66.13)
	147 (33.87)



【 3-10】

44.52%가 .  
 , ( ) 41.10% . 1998  
 가 6.16% (【 3-19】 ).  
 47.26%

【 3-19】

	(%)
	65 (44.52)
	60 (41.10)
	4 ( 2.74)
	7 ( 4.79)
	9 ( 6.16)
	1 ( 0.68)
	146 (100)

가 85.52% 가  
 20%  
 가 11.03% (【 3-20】 ).

【 3-20】

*	(%)	
	124	(85.52)
	29	(20.00)
	3	( 2.07)
	1	( 0.69)
	16	(11.03)
	145	(100)

\*: 가

69.53% 가 ( ) 가  
 (【 3-21】 (21.88%), (6.25%)

【 3-21】

	(%)	
	28	(21.88)
, ,	89	(69.53)
	8	( 6.25)
	3	( 2.34)
	128	(100)

3.9

가 50%

28.37% (【 3-22】)

【 3-22】

	(%)	
	198	(47.60)
	100	(24.04)
	118	(28.37)
	416	(100)

가 71.56%  
 (55.96%), (40.37%)  
 'VTR' 가 47.71%

【 3-23】

*	(%)	
VTR	78	(71.56)
	61	(55.96)
	4	( 3.67)
	44	(40.37)
	52	(47.71)
	2	( 1.83)
	109	(100)

\*: 가

63.89%

(【 3-24】).

가 66.35% (【 3-25】).  
 가 85.71% 가 ,

【 3-24】 ( )

	%	
	7	( 6.48)
	32	(29.63)
	69	(63.89)
	108	(100)

【 3-25】 ( )

	(%)	
	35	(33.65)
	69	(66.35)
	104	(100)

【 3-26】

*	(%)	
	5	( 7.94)
	7	(11.11)
	21	(33.33)
	54	(85.71)
	6	( 9.52)
	2	( 3.17)
	63	(100)

\*: 가

## 4.

### 4.1 1998

1999 가 , , (【 4-1】 ,【 4-2】 ,【 4-3】 )  
 60, 70 가 30, 40 가 (【 3-2】 ) 가 (【 3-3】 )  
 가 (【 4-4】 ).

#### 【 4-1】

(%)

	가	
	35.1	23.5
	6.4	15.9
	58.5	60.6
	100	100

#### 【 4-2】

(%)

	가	
	27.0	19.0
	7.0	11.1
	66.0	69.9
	100	100

#### 【 4-3】

(%)

	가	
	1.5	1.8
	32.8	27.3
	40.2	42.8
	24.8	25.9
	0.8	2.3
	100	100

【 4-4】

(%)

	가	
	7.9	13.36
	27.4	33.6
	47.6	47.5
	43.3	46.4

가

, 가 .  
 ( ) , 2.5 (【 4-5】),  
 (【 4-5】).  
 가 (【 4-6】) (【 4-9】)

가

【 4-5】

(%)

	가	
	61.0	60.4
	62.1	41.0
	29.7	42.2
	19.5	37.6
. , ,	20.8	59.0
	1.8	5.4
	-	5.0
가**	3.63	4.11

\* : 가

\*\* : 10 가 (10 )

【 4-6】

(%)

	가	
	62.8	44.5
, ,	29.1	47.2
+	7.0	4.8
	1.0	3.4
	146	(100)

【 4-7】

(%)

*	가	
	64.9	85.5
	9.3	20.0
	3.1	2.1
	1.3	0.7
	32.9	11.0

\* : 가

【 4-8】

(%)

	가	
	24.4	21.9
, ,	37.3	69.5
	1.8	6.3
	-	2.3

1

, ( ) ,

, 가

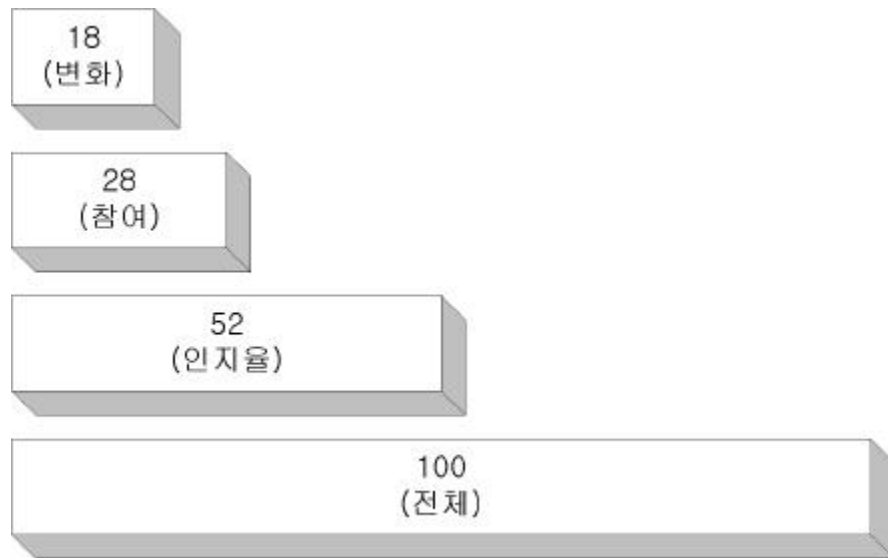
가

## 4.2

(【 3-22】 , 【 3-24】 , 【 3-25】 )

, , ( 15-20% )  
).

가



【 4-1】

## 4.1

가 가

가



- Ebrahim S, Smith GD, Systematic review of randomised controlled trials of multiple risk factor interventions for preventing coronary heart disease, *BMJ*; 314(7); 1666-74; 1997
- Electra DP, Kimberly M, Cathy T, Ramon V, Brent S, Douglas C, James W, William M, Antoinette W, Clinic-based interventions to promote breast and cervical cancer screening, *preventive medicine*, 27; 120-128; 1998
- Haynes R. B., M. E. Mattson, A. V. Chobanian, J. M. Dunbar, T. O. Engerbreton, T. F. Garrity, H. Leventhal, R. J. Levine, R. J. Levy, "Management of Patient Compliance in the Treatment of Hypertension", *Hypertension*; 4(3); 415-423; 1982
- Joint National Committee on Detection, Evaluation, and Treatment of High Blood Pressure, "The Fifth Report of the Joint National Committee on Detection, Evaluation, and Treatment of High Blood Pressure". *Arch Intern Med.*; 153; 154-183; 1993
- Joint National Committee on Detection, Evaluation, and Treatment of High Blood Pressure, "The 1988 Report of Joint National Committee on Detection, Evaluation, and Treatment of High Blood Pressure". *Arch Intern Med.*; 148; 1023-38; 1988
- McAfee T, Sofian NS, Wilson J, Hindmarsh M, The role of tobacco intervention in population-based health care : a case study, *Ame J Prev Med*; 14(3); 1998
- Okin PM, Prineas RJ, Grandits G, Rautaharju PM, Cohen JD, Crow RS, Kligfield P, Heart rate adjustment of exercise-induced ST-segment depression identifies men who benefit from a risk factor reduction program, *Circulation*; 96(9); Nov 4; 2899-2904; 1997
- Pancioli AM, Broderick J, Kothari R, Brott T, Tuchfarber A, Miller R, Khoury J, Jauch E, Public perception of stroke warning signs and knowleffe of potential risk factors, *JAMA*; 279(16); 1288-1292
- Schmid TL, Pratt M, Howze E, Policy as intervention : Environmental and policy approaches to the prevention of cardiovascular disease, *AJPH*; 85(9); 1207-1211; 1997
- Tudor-Smith C, Nutbeam D, Moore L, Catford J, Effects of the heartbeat Wales programme over five years on behavioural risks for cardiovascular disease: quasi-experimental comparison of the results from Wales and a matched reference area. *BMJ*; 316(14); 818-22; 1998
- Vartiainen E, Paavola M, McAliste A, Puska P. Fifteen-year follow-up of smoking prevention effects in the North Karelia Youth Project. *AJPH*; 88(1); 81-85; 1998
- Wallace RB, Doebbeling BN, Maxcy-Rasenau-Last; *Public Health and Preventive medicine*, 14th edition , Prentice-Hall international INC; 1998
- WHO, Hypertension control, WHO technical report series 862,report of a WHO Expert Committee; 1996
- Wilber, Joseph A., "The problem of undetected and untreated hypertension in the community", *Bulletin of the New York Academy of medicine*; 19; 510-520; 1973

< >